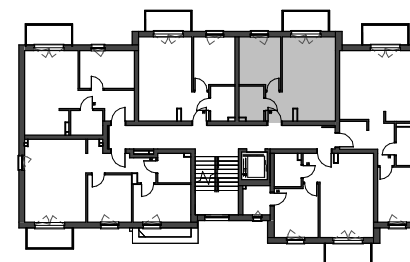
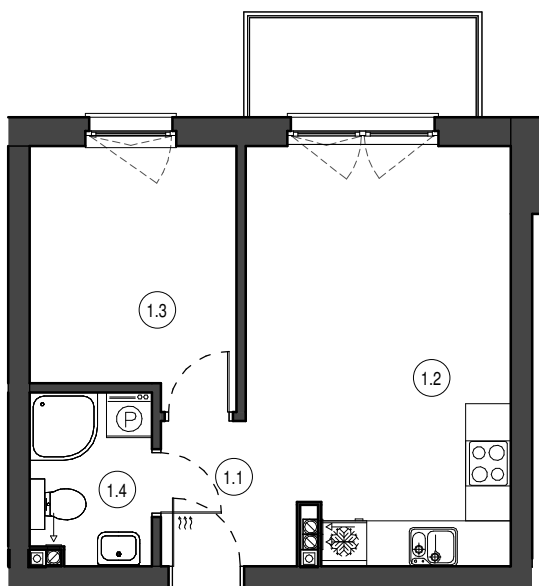


MIESZKANIE NR M9
 KONDYGNACJA PIĘTRO I
 BUDYNEK B

| | | |
|-----|-----------------|----------------------|
| 1.1 | Przedpokój | 3.09 m ² |
| 1.2 | Salon z aneksem | 18.30 m ² |
| 1.3 | Pokój | 8.98 m ² |
| 1.4 | Łazienka | 3.61 m ² |

33.98 m²



0 1 2 3 4 5 [m]

