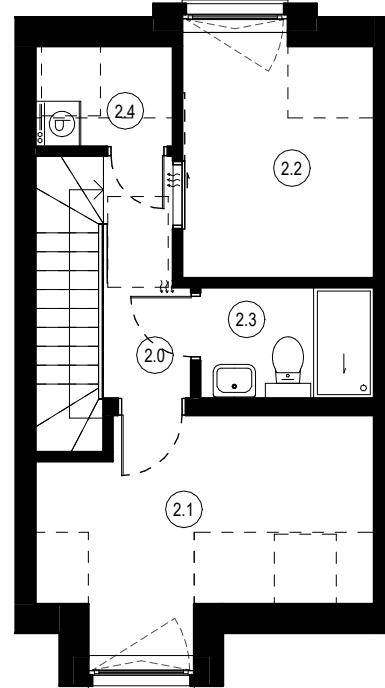
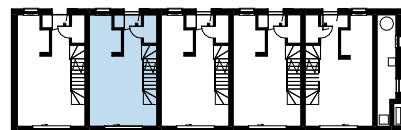


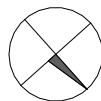
PARTER



PIĘTRO I



0 1 2 3 4 5 [m]



LOKAL
E4

BALTIC
PARK

PARTER

1.0 Wiatrołap	2.96 m ²
1.1 Salon	20.02 m ²
1.2 Kuchnia	5.03 m ²
1.3 WC	1.70 m ²
	29.71 m²

PIĘTRO I

2.0 Przedpokój	3.31 m ²
2.1 Pokój	10.09 m ²
2.2 Pokój	7.54 m ²
2.3 Łazienka	3.38 m ²
2.4 Pom.gosp.	1.56 m ²
	25.88 m²

Powierzchnia użytkowa:

55.59 m²

