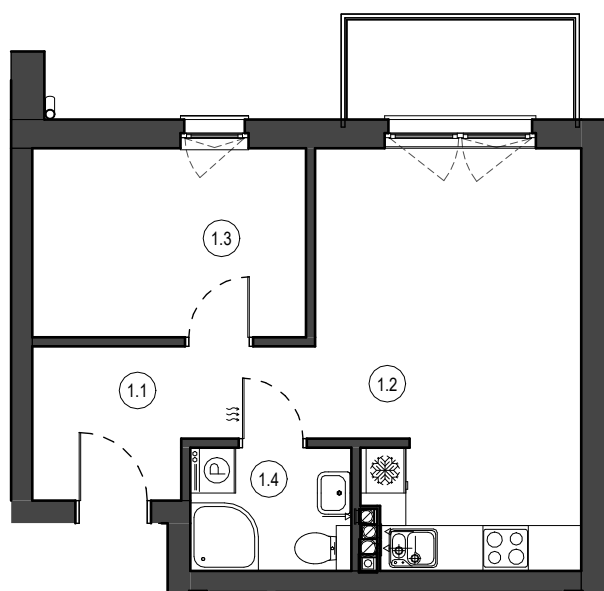


MIESZKANIE NR M11  
 KONDYGNACJA PIĘTRO I  
 BUDYNEK B

|     |                 |                      |
|-----|-----------------|----------------------|
| 1.1 | Przedpokój      | 6.18 m <sup>2</sup>  |
| 1.2 | Salon z aneksem | 18.33 m <sup>2</sup> |
| 1.3 | Pokój           | 9.05 m <sup>2</sup>  |
| 1.4 | Łazienka        | 3.47 m <sup>2</sup>  |

37.03 m<sup>2</sup>



0 1 2 3 4 5 [m]

