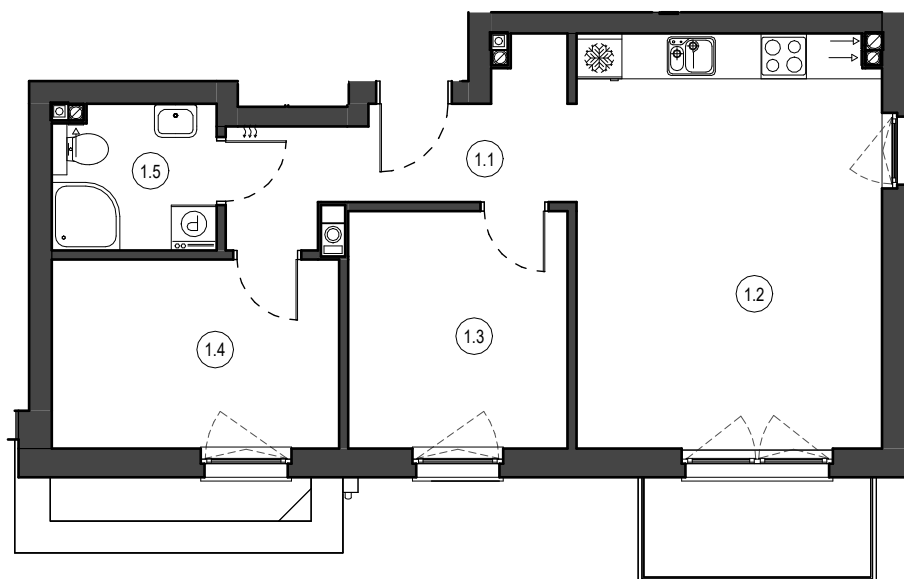
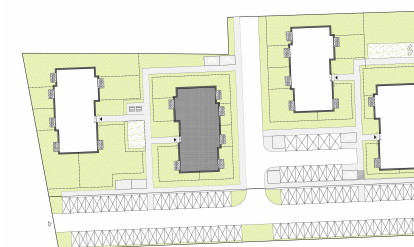
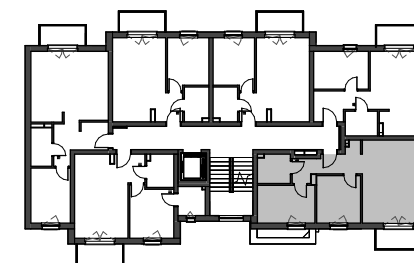


MIESZKANIE NR M12
 KONDYGNACJA PIĘTRO I
 BUDYNEK B



1.1	Przedpokój	7.07 m ²
1.2	Salon z aneksem	22.06 m ²
1.3	Pokój	9.11 m ²
1.4	Pokój	9.50 m ²
1.5	Łazienka	4.11 m ²

51.85 m²



0 1 2 3 4 5 [m]

